

**GOING...GOING...GONE!!!**



**MAGEE AUCTION & REALTY**  
 3908 Heritage Park Road  
 Piggott, AR 72454

**GOING...GOING...GONE!!!**

**61st Annual Open & Absolute FARM EQUIPMENT AUCTION**

**Friday, March 2, 2018 & Saturday, March 3, 2018**

**Early Start Time: 9:00 a.m.**

**TERMS**  
 ALL SALES FINAL- Complete payment day of sale. Cash, certified or cashier's check. Personal or company checks will be accepted and MUST be accompanied by a letter of credit from your bank unless you have established recent, satisfactory financial status with Magee Auction Company. All purchases are subject to verification with your bank or financial institution. Immediate possession of all merchandise upon proper settlement. Not responsible for accident, injury or theft and all items at buyer's risk as soon as sold. Equipment sold as is, where is, no warranties or guarantees implied. List subject to change.  
 RULES AND CONDITIONS-Anyone wishing to bid on items at the auction must register and obtain a bidder's card. Anyone bidding for an account other than their own must register as such. Auctioneer reserves the right to reject the bid of anyone who is not a registered bidder.



**MAGEE AUCTION & REALTY**

Gary N. Magee, Auctioneer  
 AR Lic. #3 - Est. 1970  
 3908 Heritage Park Road, Piggott, AR 72454  
 Phone 870-598-2689 • Cell 870-598-7334 • Fax 870-324-4117  
 Visit our website at [www.garymageeauction.com](http://www.garymageeauction.com)

Ramona Magee, Broker

**61ST ANNUAL OPEN & ABSOLUTE FARM EQUIPMENT AUCTION**

**FRIDAY, MARCH 2, 2018 & SATURDAY MARCH 3, 2018**

**NOTE EARLY START TIME 9 AM EACH DAY**

**LOCATION: MAGEE FARM EQUIPMENT COMPANY LOT**  
 2 Miles East of Poplar Bluff on Hwy. B, - Physical Address: 1266 Hwy. B  
**POPLAR BLUFF, MISSOURI**

**AUCTIONEER'S NOTE:** This is the 61st Annual Open & Absolute Farm Equipment Auction at this location, and will be bigger and better than ever. Lots of good used equipment will be at this sale. More equipment coming in daily, that is not listed on sale bill. For more information on this sale contact Doug or Mike at 573-785-2025. Personnel on site now to receive your equipment. Plan to spend both days with us.

**TRACTORS**

- JD 6200
- JD 5310
- JD 4020 w. #148 Loader
- JD 3010, 1 gas, 1 diesel
- JD 4620
- JD 1650
- JD 1010
- JD 650
- JD A
- Long 2260 with Loader
- Long 260

- Ford 4000
- Lot of Ford 8N's, 1 with Sherman transmission
- MF #2405, 2 wh., 470 hours
- MF 1250, 4 wd, with Loader
- MF 235 gas w/ 2400 Loader
- Mahindra #5010 w/Loader
- IHC 856
- IH B 414
- Farm Trac 80
- AC D 17
- Case CA

**CONSTRUCTION**

- Case IH Dozer #450C
- Cat #910 Wheel Loader
- Ford #555 Wheel Loader
- Case 85XT Skid Steer Loader
- JD Loader w/brackets, joy stick #720
- Eversman Scoop, 3 yard with Dolly
- Reynolds Dirt Scoop Train, 6 yard
- Skid Steer Cutter
- Gallion Road Grader #110, series C
- Steel Culvert, 4 in. x 28 ft.



**MAGEE AUCTION & REALTY**

Gary N. Magee, Auctioneer  
 AR Lic. #3 - Est. 1970  
 3908 Heritage Park Road, Piggott, AR 72454  
 Phone 870-598-2689 • Cell 870-598-7334 • Fax 870-324-4117

Ramona Magee, Broker



## TRAILERS

- 2- EZ Trail Seed Wagons w/motor, hyd.w/ auger
- Gooseneck Delta 4 horse Trailer
- Fuel Trailer, 500 gallon w/gas motor pump
- Jet 34 ft. Hopper Bottom Trailer, 1996 mo.
- 2-New Header Trailers, 26 ft.
- EZ Trailer Header Trailer
- Pintal Hitch Hitch Trailer, 22 ft., dual tandem w/ dove tail
- Seed Auger with Scales
- Hay Trailer, 6 bale w/Dump
- Hay Trailer, new

## FIELD EQUIPMENT

- Brandt Hipper Roller #HR40F
- JD Hippers, 12 row, 30 in.
- Lot Triple K Field Cultivators, 12 ft to 34 ft.
- JD Cultipacker #970, 25 ft.
- JD Cultipacker, 15 ft.
- Case Disk #3950, 25 ft., 7 ½ spacing
- MWT Verti-Go Disk #319
- JD Disk, 19 ft. wing type
- 2-IHC #480 Disks, 21 ft.
- Ford Disk, 21 ft.
- JD Wheel Disk, 13 ft.
- Offset Disk, wheel type, 7 ft.
- Offset Wheel Disk, 24-28, new
- MF Wheel Disk #820, 34 ft.
- Disk #490, 13 ft.
- JD CCS Planter #1590, 30 ft. air drill
- JD Planter #7100, plateless, 2 row, 3 pt., field ready
- JD #7100 Plateless Planter, 8 row, 3 pt.
- JD Planter #7000, 4 row, w/ fert.
- JD Planter, 4 row, 3pt.
- JD Grain Drill #8300
- JD Grain Drill #1850 w/Cart
- Land Pride Planter, no till #3P806NT, like new
- Great Plains #2000 Planter, solid stand, 3 pt.
- Woods Cutter #TC1680, 3 pt., like new
- 2-Dearborn Corn Picker, 1 row, field ready
- McDon Header #972, 25 ft.
- Lot of Chisel Plows, 3 pt., 2 & 3 bar

- Lot of Level Plows, 3 pt.
- Land Pride Ditch Bank Mower
- Rhino Offset Bushog, #SR14M
- Rhino Cutter, Batwing, 12 ft.
- Rhino Cutter #RH6, 6 ft.
- Schulte Cutter FX-1800, 15 ft., Batwing
- JD Rotary Hoe, 8R, 3 pt.
- Case Field Cultivator #4800, 25 ft.
- Lot 2 to 6 Bottom Plows, 3 pt
- Lot Disks, 3 pt.
- Lot Cutters, 5 to 7 ft., 3 pt.
- Lot Rock Rakes, 3 pt.
- Lot Rock Rakes, 3 pt.
- Harrow, 12 ft., 3 pt.
- Lot Cultivators, 1R, 2R, 4R, 8R, 3pt.
- Lot Middle Busters, 3 pt

## HAY, CATTLE & GRAIN

### EQUIPMENT

- 2-Ford Square Balers #532, working condition
- Round Bale Feeder, new
- Lot Sickle Mowers, 3 pt.
- Lot Hay Rakes, 10-wheel
- Lot Wheel Rakes, 3 pt, 4-5, new
- Lot Bar Hay Rales, 1- PTO
- Lot Hay Tedders
- Lot Post Drivers, 3 pt.
- Lot Rotary Mower Cutters
- Mayrath Grain Auger #1061
- Vermeer Mower Conditioner, TM800
- New Holland Mower Conditioner #1412
- Sitrex Hay Rake, 8 wheel
- Rhino Disk Mower, 10 ft., 3 pt.
- Round Hay Bale Trailer
- Kuhn Disk Mower, 9 ft., 3 pt.
- Kawasaki #400. 4x4
- Arctic Cat #400, 4x4
- Vermeer Disk Mower #7020, 9 ft., 3 pt.

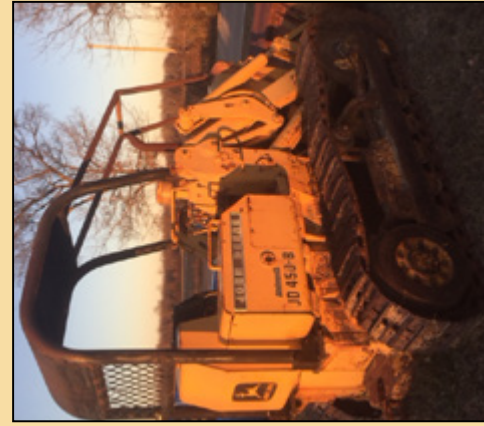
## LAWN MOWERS ATV'S &

### TILLERS

- Snapper zero turn, #48N
- Husquarna GTH2548
- Cub Cadet, LT1042, 42 in. deck
- Cub Cadet, L-1046, 46 in. deck
- Cub Cadet R2T, 50 in deck
- Cub Cadet R2t, 54 in. deck
- Cub Cadet RZT-S, 54 in. deck
- JD LT160, 42 in. deck
- Dixon 2042, 42 in. deck

*Many other items not listed*

**No Buyer's Premium**



- Kubota ZG23, 54 in. deck
- Kubota 2012 ZG327, zero turn, 69 in. deck
- Kubota HST G1800S, diesel, 4 wheel steer, 48 in deck
- Craftsman Garden Tiller

## TRUCKS

- GMC Truck 1998, #c55, utility bed w/ bucket lift
- Ford Truck 1994 mo., #700 w/10 ft. steel bed
- 2007 Chevy 3500 HD Duramax Diesel
- Chevy 10-Wheeler, 1969 w/ dump grain
- IHC 10-Wheeler w/ dump grain
- Ford 9000 w/Lime & Fert. Bed
- Ford 800 10-Wheeler w/Dump Grain bed
- GMC C5500, 2005 mo. L.P. Steel flat bed

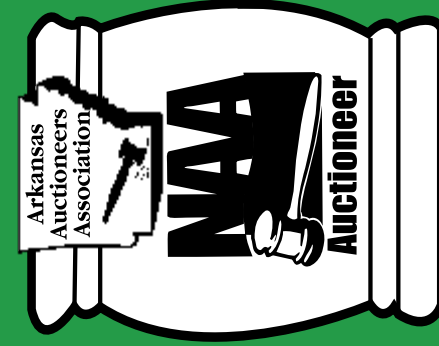
## DIRT. IRRIGATION EQUIPMENT

- Land Pride PTO Ditcher #DTM55, like new
- Fair Oaks Land Plane, 18x50
- New Killifer Blade, 12 ft.
- Lot Used Killifer Blades, 6 ft. to 14 ft.
- Lot Box Blades, 3 pt.
- Lot Pond Scoops, 3 pt.
- Irrigation Pipe Fittings, 8 inch, gated T-T's-Elbows
- Set PreMerge Tank for 4840-4850
- JD Dozer Blade #450B
- Kubota Front Dozer Blade #5500
- Hicks Poly Pipe Layer w/ anhydrous
- Plow & cover and 2-Diamond H Killifer Blade, 12 ft.

## MISCELLANEOUS

- CSeed Auger with Scales
- Lot Post Hole Diggers, 3 pt.
- Lot Tiller, 3 pt.

**VISIT OUR WEBSITE [WWW.GARYMAGEEAUCTION.COM](http://WWW.GARYMAGEEAUCTION.COM)  
FOR MORE INFORMATION**



Gary N. Magee, Auctioneer

AR Lic. #3 – Est. 1970

3908 Heritage Park Road, Piggott, AR 72454

Phone 870-598-2689 • Cell 870-598-7334 • Fax 870-324-4117

Visit our website at [www.garymageeauction.com](http://www.garymageeauction.com)

# MA GEE & BEAUFY A U C T I O N

Ramona Magee, Broker